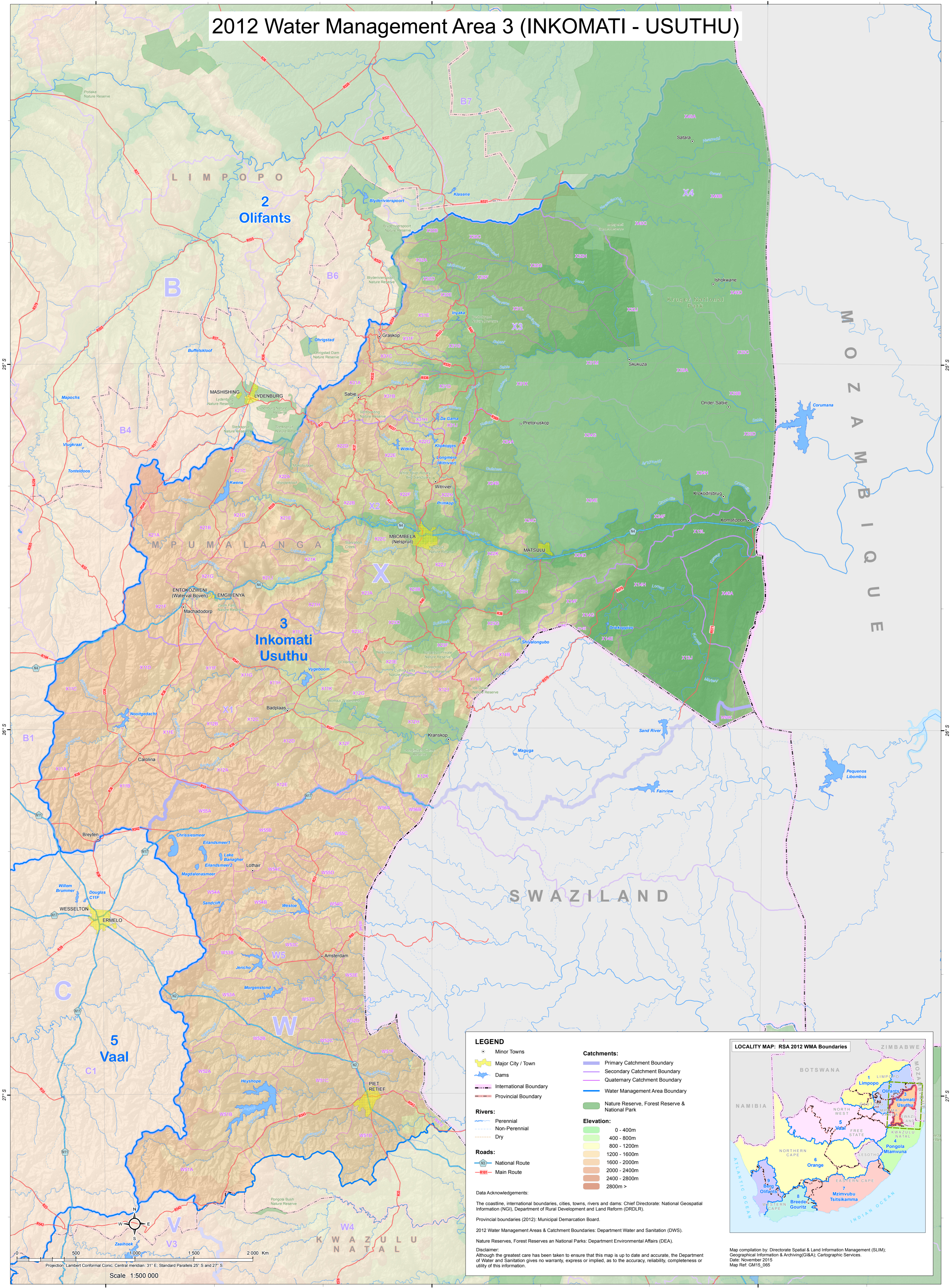


# 2012 Water Management Area 3 (INKOMATI - USUTHU)



**LEGEND**

- Minor Towns
- Major City / Town
- Dams
- International Boundary
- Provincial Boundary
- Rivers:
  - Perennial
  - Non-Perennial
  - Dry
- Roads:
  - National Route
  - Main Route

**Catchments:**

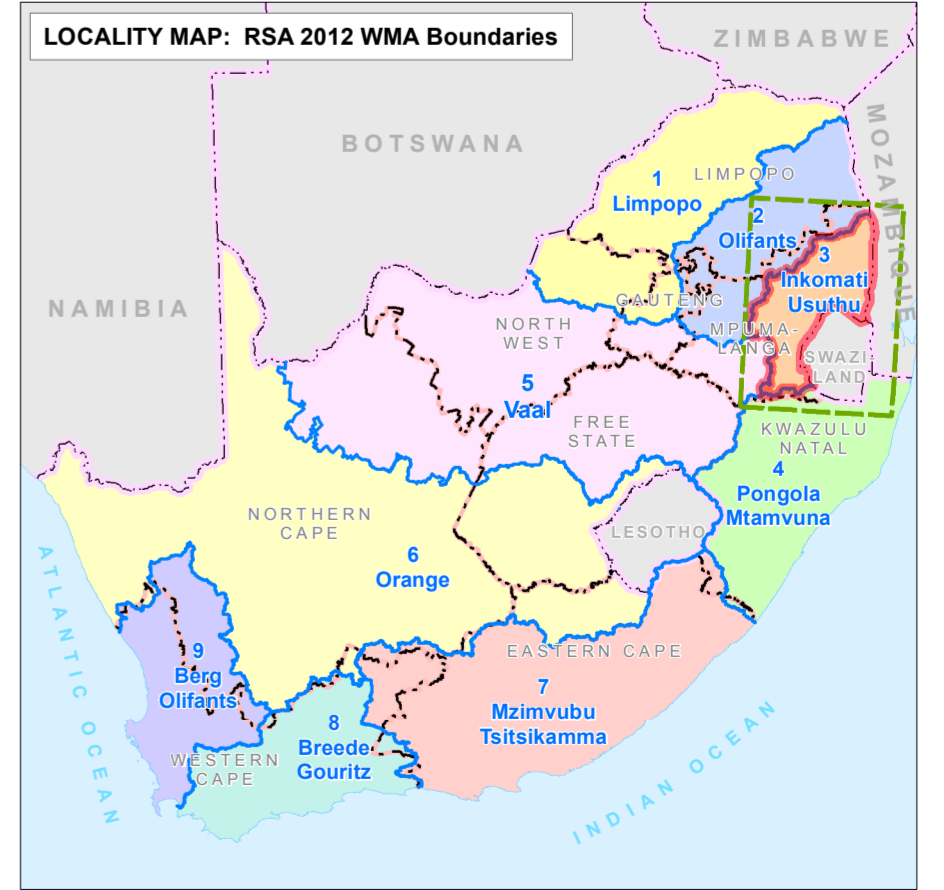
- Primary Catchment Boundary
- Secondary Catchment Boundary
- Quaternary Catchment Boundary
- Water Management Area Boundary
- Nature Reserve, Forest Reserve & National Park

**Elevation:**

- 0 - 400m
- 400 - 800m
- 800 - 1200m
- 1200 - 1600m
- 1600 - 2000m
- 2000 - 2400m
- 2400 - 2800m
- 2800m >

Data Acknowledgements:  
 The coastline, international boundaries, cities, towns, rivers and dams: Chief Directorate: National Geospatial Information (NGI), Department of Rural Development and Land Reform (DRDLR).  
 Provincial boundaries (2012): Municipal Demarcation Board.  
 2012 Water Management Areas & Catchment Boundaries: Department Water and Sanitation (DWS).  
 Nature Reserves, Forest Reserves and National Parks: Department Environmental Affairs (DEA).

**Disclaimer:**  
 Although the greatest care has been taken to ensure that this map is up to date and accurate, the Department of Water and Sanitation gives no warranty, express or implied, as to the accuracy, reliability, completeness or utility of this information.



Map compilation by: Directorate Spatial & Land Information Management (SLIM);  
 Geographical Information & Archiving (GISA); Cartographic Services.  
 Date: November 2015  
 Map Ref: GM15\_065